



## SPECIAL SCHEDULES

### CHARTER WEEK

Thu, Oct. 3 7:30am-5pm  
Fri, Oct. 4 Noon-5pm  
Sat, Oct. 5 10 am-2 pm  
Sun, Oct. 6 5 pm-10pm

### END-OF-TERM

Mon - Thu, Nov. 4-7  
7:30am-11pm  
Fri, Nov. 8 - Fri, Nov.15  
Regular Hours

### FALL BREAK

Sat, Nov.16-Sun, Nov. 17  
CLOSED  
Mon - Fri, Nov. 18-21  
9am-1pm  
Sat, Nov 22-Sun, Nov 23  
CLOSED  
Mon - Wed, Nov. 20-22  
9 am-1pm  
Thu, Nov. 23 - Sun, Nov. 26  
CLOSED  
Mon, Nov. 27  
Winter term begins.  
Resume regular hours.

<http://www.brynathyn.edu/academics/swedenborg-library>

## New Master's in Special Education Program

We are excited to feature the new Master of Science degree in Special Education with a literacy concentration! Bryn Athyn College started this new graduate degree program this summer with two special, intensive sessions which included courses on Special Education topics around spiritual perspectives, family and community. There are ten students currently enrolled, with in-person and synchronous virtual access available to them.

Our faculty is excited to get this program rolling. They are delighted to be working with an outstanding group of educators who are eager to hone their skills to meet the needs of all students, and

those with learning differences in particular.

In collaboration with the Education Department faculty, the library has been expanding our collection of print and online materials specifically chosen to support this program. Most notably, in June we added EBSCO's "Education Full-Text." This electronic collection includes indexed, abstracted, and expert-selected articles from over 1,000 journals in education and related fields.

Additionally, all Bryn Athyn College and ANCSS students are able to access the library's entire electronic resources collection either on-campus or remotely through OCLC's EZProxy

service simply by signing into their network account.

Dr. Kelly Ballard, BAC's Education Department head, with over 13 years experience in teaching, has focused on literacy and special education throughout her career. She spearheaded the effort for our new MS. Ed. program accreditation by the Commonwealth of Pennsylvania and is very excited to get down to the business of working with teachers and students!

We are delighted to have this opportunity to partner with the Education Department in strengthening and increasing our ability to prepare students to serve in education fields.

### In this issue:

Graduate Education	1
Swedenborgiana	2
Art Show	2
Personal Librarian!	3
New Staff Intros	3
Staff Recommends	3



MS Ed. students and Rev. Dr. ("Coach") Ray Silverman enjoying classes in the Boardroom. Photo by Serena Sutton.

## Swedenborgiana

Last May 2<sup>nd</sup>, members of the Glencairn Board were invited to have a private tour and exhibit of Swedenborgiana and the New Church collections. That evening, my presentation was one of several given to the Glencairn Foundation members at their spring meeting.

Some of the items on display included Swedenborg's own copy of *True Christian Religion*, his personal copy of the second volume of *Conjugial Love*, many books representing his own library, and books from the 18th century that he mentioned or quoted. The Board was also given a tour of the climate-controlled vaults which house our extensive New Church materials. Also on display were items from the Academy Archives, including an official U.S. flag of blue and gold stars honoring the

Bryn Athyn families with military service and losses in the First World War. In addition to my presentation, Gregory Jackson and Marvin Clymer also presented information on the Archives and Digital Collections. We were happy to answer questions about the collections, and about the scholarly research that has been conducted using these materials.

We were thrilled recently to receive notice that our request for funds toward an endowment was awarded and the amount increased to \$150,000. This fund will be used as seed money for an endowment to support the Department of Swedenborgiana and New Church Collections, currently funded by grants and a shared endowed position for the Academy Archivist. Grant

funding alone is not reliable to insure the maintenance, development, digitization, and staffing of these collections which are the primary repository for New Church thought and history. If you are interested in supporting this effort, go here to donate online: <https://brynathyn.edu/swedenborg-library/swedenborgiana-links/>

Due to budgetary reasons my hours have been reduced to one morning a week. You can reach me on Tuesday mornings from 8 am to 11 am or by appointment. (267)502-2547, [carroll.odhner@brynathyn.edu](mailto:carroll.odhner@brynathyn.edu), cell (267) 471-9161

Coming soon - exciting news of another grant award!

-Carroll Odhner  
Director of Swedenborgiana and New Church Research



*Carroll Odhner, Greg Jackson, and Marvin Clymer with members of the Glencairn Board.*

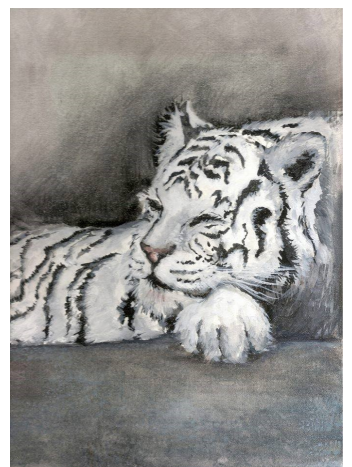
## Art Exhibit: Jency Latta

Jency Latta has found time to explore art in one form or another since the age of two. As a decorative artist, she's been painting murals and furniture for the last 25 years, for private homes as well as for a yoga studio, a movie set, a restaurant, and more recently, a bowling alley! In

the last ten years she's done children's book illustration for other authors, in addition to having written and illustrated a few books of her own. She says her ultimate goal would be to create an animated film in collaboration with her singer/songwriter daughter.

We are also pleased during her exhibit to show off the new lighting in the gallery, funded by the Friends of the Swedenborg Library.

Please join us on Sunday, Sept. 8, 2019 at 4pm for our art opening and a talk by the artist.



© Jency Latta

## Faculty and Staff Recommend:

If you're looking for great books for fall, we have a few to recommend!

*Where the Crawdads Sing* by Delia Owens (Janet Lockard, Circulation Manager) is a coming of age story of resiliency, survival, love, loneliness, desperation, and strength. Kya, called Marsh Girl has survived for years alone in the North Carolina coast marsh abandoned by her parents, siblings, school system, the entire town. This book is a celebration of all life, human and mother earth alike.

*Turtles All the Way Down* by John Green (Gwynne B. Haladay, Library Interlibrary Loan Supervisor). A fascinating, heartfelt, and deep look into the mind of someone with Obsessive Compulsive Disorder. Although the story is fictional, it is written by someone who suffers from this mental illness, so it is an authentic

and enlightening depiction.

*The Warmth of Other Suns* by Isabel Wilkerson (Caira Bongers, Assistant Professor of Mathematics.) The history of the migration of African Americans from the deep south to the northern and midwestern parts of the country had a significant impact on America. These individual stories, as representative of the larger issues, are simultaneously endearing and gut wrenching.

*Outlander* by Diana Gabaldon (Maria Sumoza, Institutional Research Coordinator.)

*Outlander* is the first in a series of eight historical multi-genre novels. Claire Randall travels through time to 18<sup>th</sup> century Scotland and finds adventure and romance with the dashing Jamie Fraser. All the action -- nonstop. She doesn't get a break!

## New Faces in the Library!

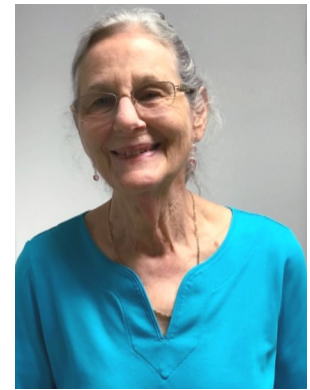
Amanda Miller joined us this past April, working part-time, evenings, at the front desk. She is our Access and User Services Assistant and is helping us improve access to online journals and New Church collections, in addition to helping students and patrons. She is happy to be working with the team. She says, "It sparks joy every time you are able to help a student succeed!"



Amanda Miller.  
Photo by Derek Austin.

Emily Smith joined us in March of 2019 as a volunteer. She previously worked in the General Church offices for over 30 years. She enjoys spending time with our hard-working students. She says she was drawn to our beautiful library by the friendliness of the staff.

We love having both Emily and Amanda working with us! If you see them, be sure to stop and say hello!



Emily Smith

## Personal Librarian Program

A new student does not always feel comfortable asking or think it obvious where to go for help. To point students in the right direction, we are pleased to tell you about our pilot Personal Librarian Program launching this academic year. The purpose of this program is to help raise awareness of our services

and resources available from the Library, and to increase individualized support. We are commencing by matching incoming freshmen with a member of the Library staff. The individual student's Personal Librarian serves as the student's guide to, and front line of contact with the Library.

Personal Librarians will help students:

- Navigate the academic library environment
- Get started with using research tools
- Connect with the right person for help
- Learn about new library resources, services, and events



Photo courtesy of Canva.

*BI-Lines* is published 3 times a year and is made available in print and online by The Swedenborg Library.

© The Swedenborg Library, 2018

---

Phone: 267.502.2524

Fax: 267.502.2637

E-mail: [library@brynathyn.edu](mailto:library@brynathyn.edu)

Carol Traveny, Editor

Andi Sibley, Assistant Editor

*Photos by Andi Sibley unless otherwise indicated,*



Chat with a librarian from our library webpage!



Follow us on Instagram and Facebook!

## **Swedenborg Library Mission Statement**

*Our mission is to provide materials, information, and services to support the academic programs of Bryn Athyn College and to acquire, preserve, and promote New Church collections and archives for use throughout the world.*



### **REGULAR HOURS**

Monday - Thursday	7:30 am - 10 pm
Friday	7:30 am - 5 pm
Saturday	10 am - 2 pm
Sunday	5 pm - 10 pm

Swedenborg Library  
Bryn Athyn College  
2925 College Drive  
PO Box 740  
Bryn Athyn, PA 19009